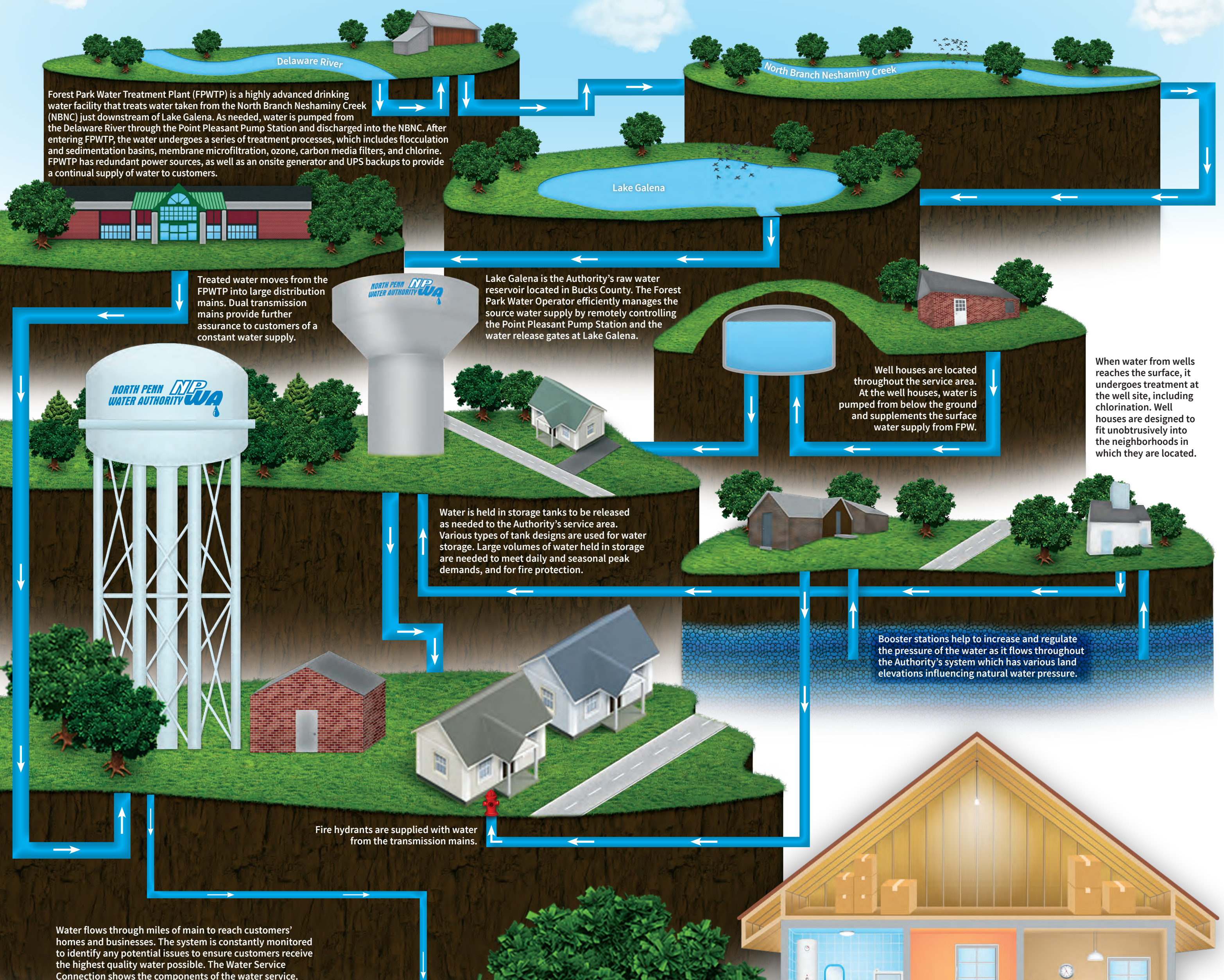


NORTH PENN WATER AUTHORITY WATER SYSTEM



The below illustration depicts the North Penn Water Authority's (NPWA) Water System as it moves water from its source to the customer's home or business. Raw water is pumped when needed from the Delaware River through the Point Pleasant Pump Station, and is discharged into the North Branch of the Neshaminy Creek. The source water is stored in Lake Galena, treated at the Forest Park Water Treatment Plant and then distributed to customers throughout portions of Bucks and Montgomery Counties.



Water Service Connection

